



SYSTA MET INDIA
CUSTOMIZED METAL ENGINEERING





SYSTA MET INDIA
CUSTOMIZED METAL ENGINEERING

“

Excellence
is not a skill, its an
ATTITUDE

”





SYSTA MET INDIA
CUSTOMIZED METAL ENGINEERING



About Us

Systa Met India is one of the leading manufacturers of customized engineering products in the country. Systa Met's modern state of art manufacturing unit in Jamnagar, Gujarat is equipped with the cutting edge machines and a technically qualified team to meet the increasing needs of the customer.

Over the years Systa Met has excelled at serving various sectors spanning over sanitary ware, plumbing, electrical, automobile etc. with its range of customized components.

We offer products in a variety of metals like Brass, Zinc(Zamac), Stainless Steel etc. and more importantly products can be custom made exactly in accordance with the specification of the customer.

Willingness to provide quality that surpasses customer's expectations at extremely competitive prices is what sets us apart from the competition.



The Company has its modern manufacturing unit in Jamnagar, Gujarat. It is equipped with the latest electroplating and electrophoretic lacquering process, forging and power presses, fully equipped tool room, design department and a technically qualified assurance team. All manufacturing activity is carried out with state of art CNC machines which helps us in getting the best quality products which can match up international standards. All required manufacturing processes under one roof not only helps us in meeting delivery deadlines but also gives us better on the quality of the final product. More importantly our infrastructure not only enables to work with various metals like Brass, Zinc, Stainless Steel, Mild Steel and Aluminum but also helps us to customize the product in accordance with specific requirements of clients which may be in lines with material, finish or even design. We are known not just by the quality of our products, but also for the way we build our relationships.

BRASS CASTING

IMR Die Casting machine with daily capacity of 2000 kgs along with manual gravity diecasting unit with 1000 kgs per day capacity



ZINC CASTING

Hot Chamber Zinc Die Casting Machine from 88 tonsto 160 tons.
Capacity: 1000 shots/day

FORGING

Forging Press 150 to 300 ton.
Capacity: 5000 Strokes per day



Infrastructure

Machining

Vertical Milling Center 10 nos. Capacity: 2500 pcs/day
CNC Turning Center 10 nos. Capacity: 3000 pcs/day
Sliding Head- Citizen 32mm dia
Hand Throbes, Drilling, Milling, Multi Drilling, SPMS 50 Nos.



Tube Bending > Roll-Grooving
3mm to 30mm tube (Number of machine 5 Nos.)
Capacity: 5000 pcs/day

INDUCTION BRAZING
Suitable for Brass to Brass brazing.
Capacity: 500 pcs/day





GRINDING AND POLISHING

Manual And Automatic Grinding & Polishing Machines 100 nos.
Capacity: 30000 pcs/day

ELECTROPLATING

We Have the following finishes available at our Electroplating Unit: Brass Plating, Gold Plating, Black Nickle Plating, Antique Brass, Antique Copper, Nickle and Chrome Plating.
Capacity : 30000 Pcs. Per Day



PHYSICAL VAPOUR DEPOSITION (PVD)

Multi-arc ion coating equipment is a ion coating machine of efficiency, harmless and pollution-free It has the features of fast deposition rate, great ionization rate, big ion energy, easy operation, lowcost, large productive capacity, etc.

FINISH : ROSE GOLD, GOLD CHROME, BLACK (Z-BLACK), ZIRCONIUM (CHAMPAGNE)



LASER MARKING

Equipped With Latest Laser marking machine & pad printing unit.
Capacity: 5000 pcs/day



Infrastructure

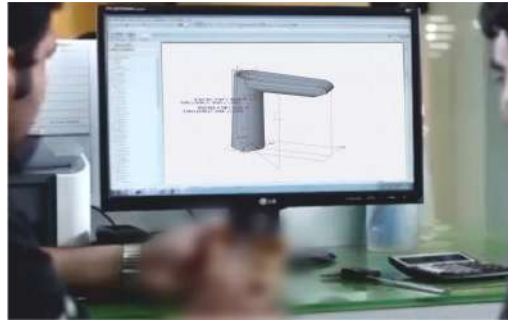


PRESS SHOP

Power Presses from 5 ton-150 ton
Capacity: 10000 strokes/day

DESIGN DEPARTMENT

Highly qualified dedicated design engineers for designing, prototyping , & development of new products. We use cad-cam software & 3D printing facility for quick developments.



TOOL ROOM

Fully Equipped In House Tool Room with CNC wirecut, vmc , Spark erosion , Lathe, surface grinder , MNTR Milling and all types of conventional machines for making forging tools, casting moulds, press tools, Jigs and Fixtures.



ASSEMBLY SHOP

Various assembly lines suitable for faucets, shower hinges, bath accessories and other customized products.
Capacity: 3000 assemblies per day.





Our extensive experience allows us to offer sound technical support services, from design advancements to testing and commissioning of the product. Due to strict quality procedures our customers are ensured that their requirements are met accurately and consistently. The quality control department is equipped with all the necessary testing equipment, used by a technically qualified team. Quality control forms an integral part at every stage right from reception of raw materials to delivery of finished goods. Various tests like Salt Spray test, Sulphur Dioxide Test, Plating Thickness Test, Spectro Machine, Air & Water Leak Test, Quenching Test, etc. are carried out to make sure our products can measure up to international standards. In Systa Met India excellencies not an exception but a prevailing attitude.



Quality Policy

We at Syste Met India Pvt. Ltd. are committed to manufacture and supply consistently defect free components to the customer, enhancing customer satisfaction by meeting customer requirements at competitive prices.

We at Syste Met India Pvt. Ltd. thrive to understand and fulfill with quick response the changing needs to the customer from time to time.

We at Syste Met India Pvt. Ltd. are committed to continual improvement in manufacturing processes and factory environment through total involvement of employees.



Salt Spray Test



Visual Measuring System



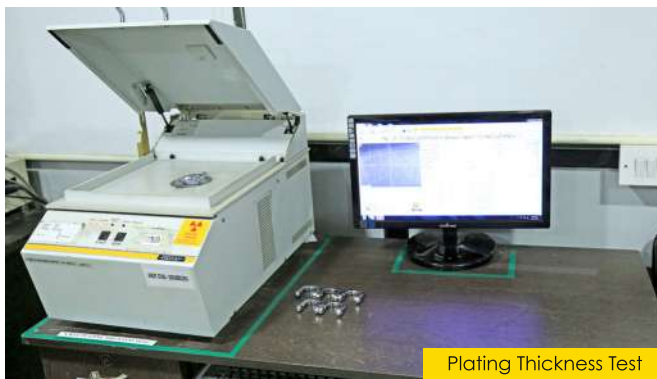
Sulphur Dioxide Test



Profile Projector



Metal Hardness Test



Plating Thickness Test



Spectro Machine



Air and Water Leakage Test



Quenching Test



Mini CMM

BRASS CASTINGS



ZINC PRESSURE DIE CASTINGS



**BRAZED AND
BENDING PARTS**



**SHEET METAL
PARTS**



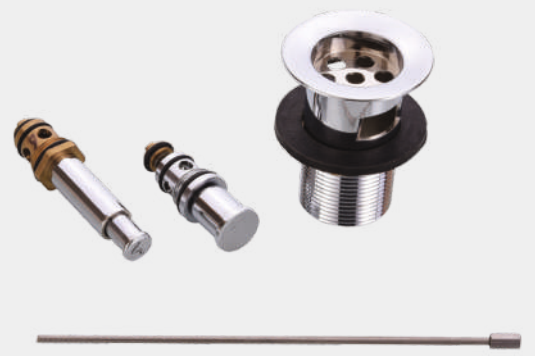
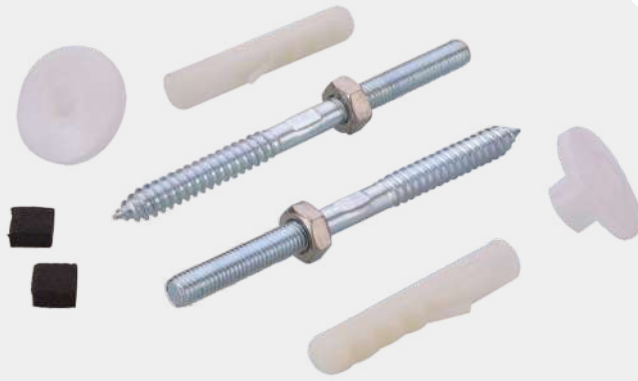
FORGINGS



TURNED PARTS (CNC/VMC/CONVENTIONAL)



ASSEMBLIES





Bracket Support Clamp
Material: Brass
Finish: CP, SS

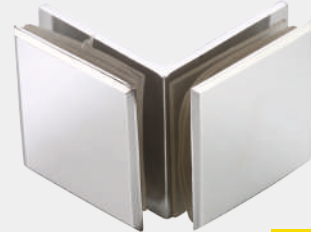


Bracket Wall Socket
Material: Brass
Finish: CP, SS

SHOWER CONNECTORS



Wall To Glass 180° Connector
Material: Brass
Finish: CP, SS



Glass To Glass 90° Connector
Material: Brass
Finish: CP, SS



Glass To Glass 135° Connector
Material: Brass
Finish: CP, SS



Wall To Glass 90° Connector
Material: Brass
Finish: CP, SS



Shower Handle
Material: Brass
Finish: CP, SS

SHOWER HANDLES & KNOBS



Glass Door Knob
Material: Brass
Finish: CP, SS



Glass Door Knob
Material: Brass
Finish: CP, SS



Glass Door Knob
Material: Brass
Finish: CP, SS

SHOWER HINGES



Wall To Glass 90° Hinge
Material: Brass
Finish: CP, SS



Glass To Glass 180° Hinge
Material: Brass
Finish: CP, SS



Glass To Glass 135° Hinge
Material: Brass
Finish: CP, SS



Wall To Glass 90° Hinge
1 Side Flap
Material: Brass
Finish: CP, SS



Wall To Glass Fix Clip
Material: Brass
Finish: CP, SS



Glass To Glass 90° Hinge
Material: Brass
Finish: CP, SS

BATH ACCESSORIES



Tumbler Holder
VBA 90201
Material: Brass
Finish: CP



Soap Dish Brass
VBA 90202
Material: Brass
Finish: CP



Soap Dish Glass
VBA 90203
Material: Brass
Finish: CP



Robe Hook Single
VBA 90204
Material: Brass
Finish: CP



Robe Hook Double
VBA 90205
Material: Brass
Finish: CP



Napkin Ring
VBA 90206
Material: Brass
Finish: CP



Tissue Paper Holder
VBA 90208
Material: Brass
Finish: CP



Liquid Soap Holder
VBA 90209
Material: Brass
Finish: CP



Towel Rod
VBA 90207
Material: Brass
Finish: CP



Towel Rack
VBA 902010
Material: Brass
Finish: CP

BATH ACCESSORIES



Tumbler Holder
VBA 90501
Material: Brass
Finish: CP



Soap Dish Brass
VBA 90502
Material: Brass
Finish: CP



Robe Hook Single
VBA 90504
Material: Brass
Finish: CP



Robe Hook Double
VBA 90505
Material: Brass
Finish: CP



Napkin Ring
VBA 90506
Material: Brass
Finish: CP



Tissue Paper Holder
VBA 90508
Material: Brass
Finish: CP



Liquid Soap Holder
VBA 90509
Material: Brass
Finish: CP



Towel Rod
VBA 90507
Material: Brass
Finish: CP



Towel Rack
VBA-90510
Material: Brass
Finish: CP

BATH ACCESSORIES



Tumbler Holder
VBA 90301
Material: Brass
Finish: CP



Soap Dish
VBA 90302
Material: Brass
Finish: CP



Robe Hook Single
VBA 90304
Material: Brass
Finish: CP



Robe Hook Double
VBA 90305
Material: Brass
Finish: CP



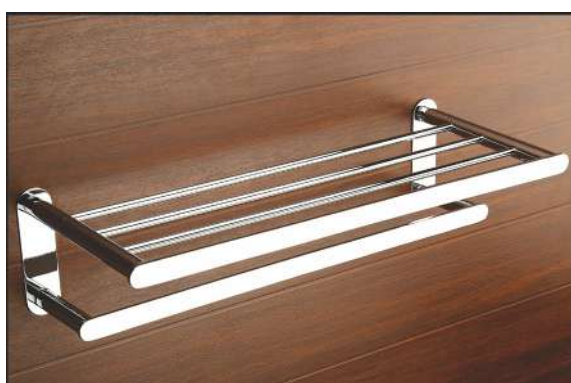
Napkin Ring
VBA 90306
Material: Brass
Finish: CP



Tissue Paper Holder
VBA 90308
Material: Brass
Finish: CP



Liquid Soap Holder
VBA 90309
Material: Brass
Finish: CP



Towel Rack
VBA 903010
Material: Brass
Finish: CP

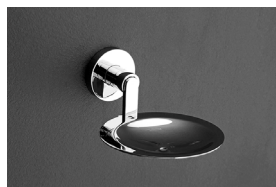


Towel Rod
VBA 90307
Material: Brass
Finish: CP

BATH ACCESSORIES



Tumbler Holder
VBA 90801
Material: Brass
Finish: CP



Soap Dish Brass
VBA 90802
Material: Brass
Finish: CP



Soap Dish Glass
VBA 90803
Material: Brass
Finish: CP



Robe Hook Single
VBA 90804
Material: Brass
Finish: CP



Napkin Ring
VBA 90806
Material: Brass
Finish: CP



Tissue Paper Holder
VBA 90808
Material: Brass
Finish: CP



Liquid Soap Holder
VBA 90809
Material: Brass
Finish: CP



Towel Rod
VBA 90807
Material: Brass
Finish: CP



Towel Rack
VBA 908010
Material: Brass
Finish: CP



SYSTA MET INDIA

CUSTOMIZED METAL ENGINEERING

Plot No. 3254 . Road No. A . G.I.D.C . Phase III . Dared
Jamnagar . Gujarat . India . 361 004

† +91 288 2772 400 . e sales@systemetindia.com

www.systemetindia.com